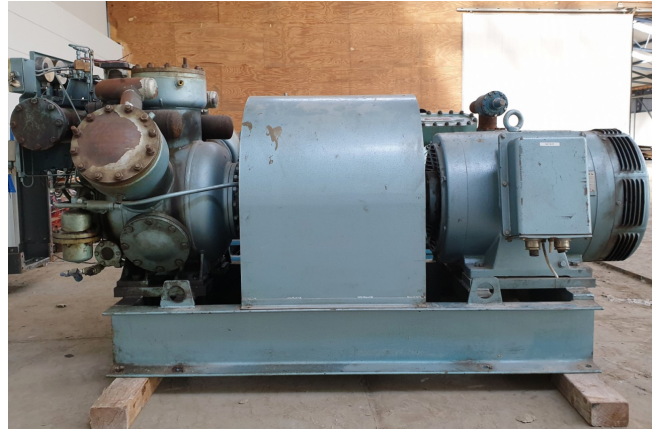


Grasso RC 311

Specifications

Marka	Grasso
Typ	RC 311
Czynnik chłodzący	NH 3 (ammonia)
kW at +10°C/+40°C	495,0
kW at 0°C/+40°C	331,3
kW at -5°C/+40°C	266,0
kW at -10°C/+40°C	209,2
Silnik elektryczny Specs	Schorch 50Hz / 75 kW / 975 RPM
Podstawa na stalowej ramie	✓
Okno widokowe	✓
m3 / h	399
Rozmiary	2400x1000x1250 mm (LxWxH)
Stock	1



Description

Used Grasso RC 311

Used Grasso RC 311 compressor direct driven by Schorch electric motor 50 Hz - 75 kW - 975 RPM.

*Why choose for HOSBV? Were not only the largest used refrigeration specialist in Europe, but also, we deliver all equipment including an extensive test, warranty and industrial cleaning.

*Optional we can also arrange the logistics.

